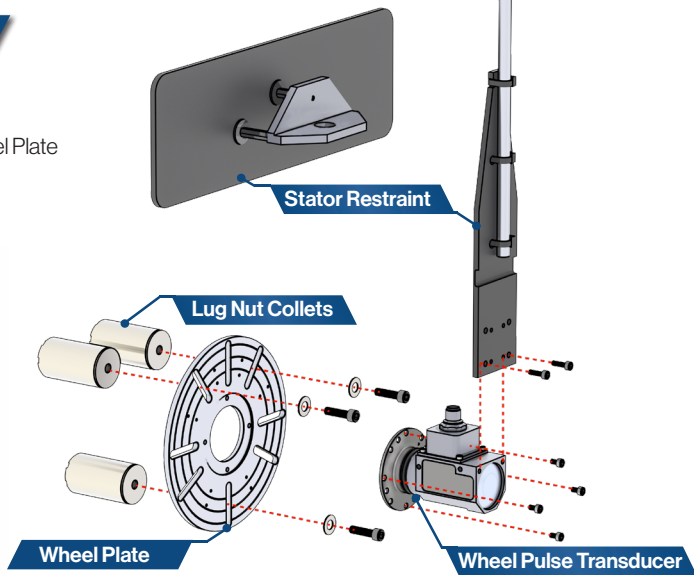
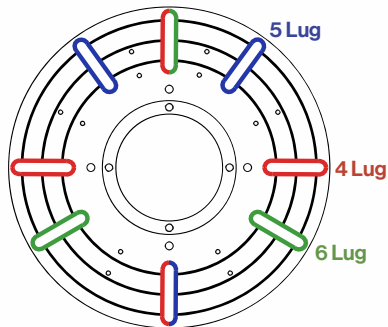
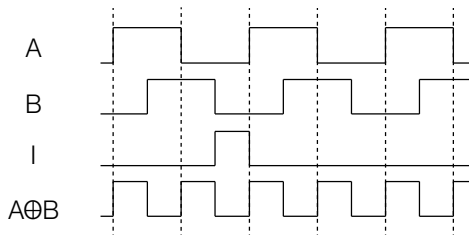


Installing

1. Attach Lug Nut Collets to Wheel Plate
2. Mount the Wheel Plate to Hub
3. Attach Wheel Pulse Transducer to Wheel Plate
4. Install Stator Restraint System
5. Attach Cable



Encoder Outputs



Encoder choices	Outputs: Pulses per revolution			
	A	B	I	$A \oplus B$
E256	256	256	1	512
E360	360	360	1	720
E500	500	500	1	1000
E512	512	512	1	1024

Pin

Channel

Color

1

5-20 VDC



2

Ground



3

A Out



4

B Out



5

I Out



6

$A \oplus B$ Out



To see a complete manual of the product, visit michsci.com/resources



© Copyright 2019